

# How to install the ITC on an AC/DC ECU

---

First of all make sure you have the right ECU installed on the fridge. There are 2 ways to find this out.

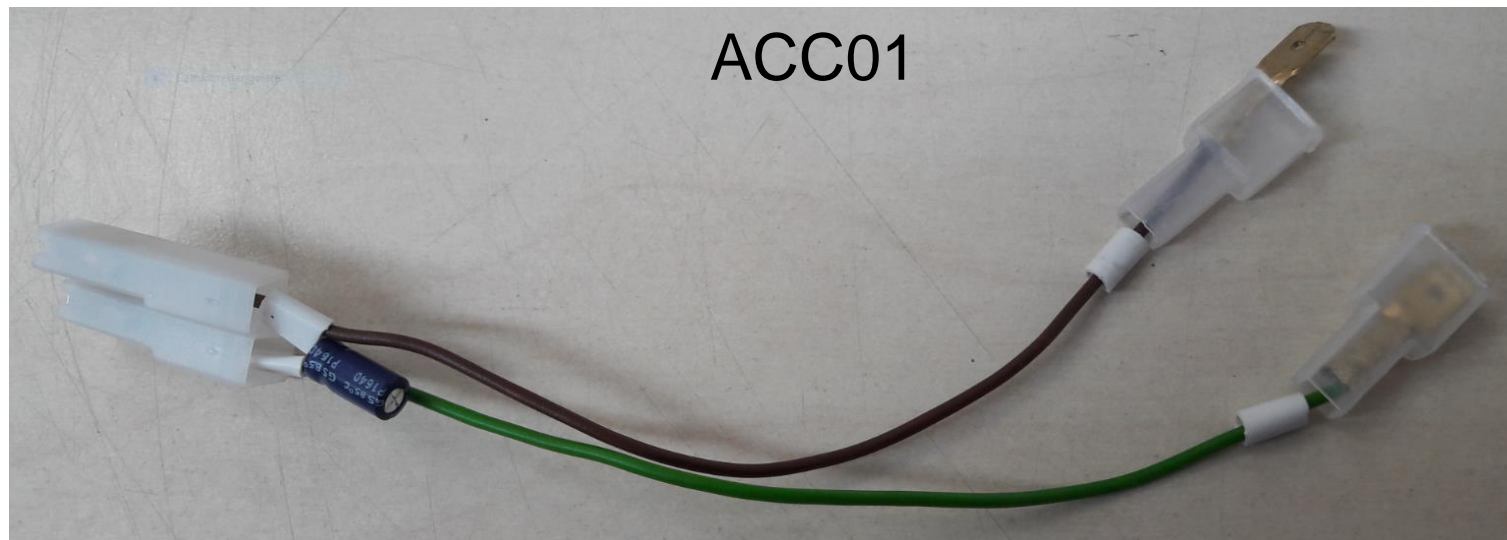
By the part number



By the connection «D/I»

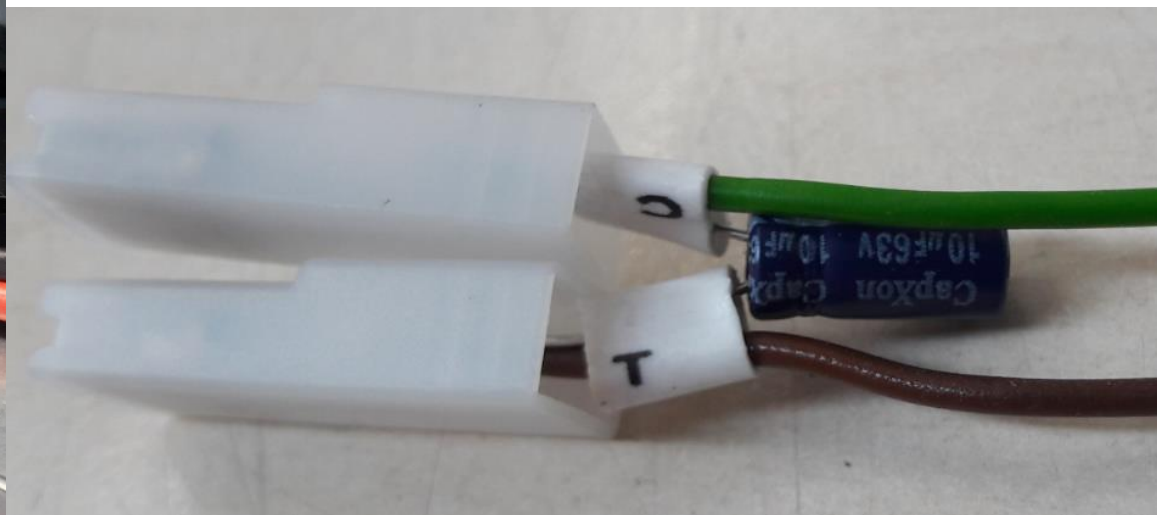


In the package there are 2 accessories marked as ACC01 and ACC02.

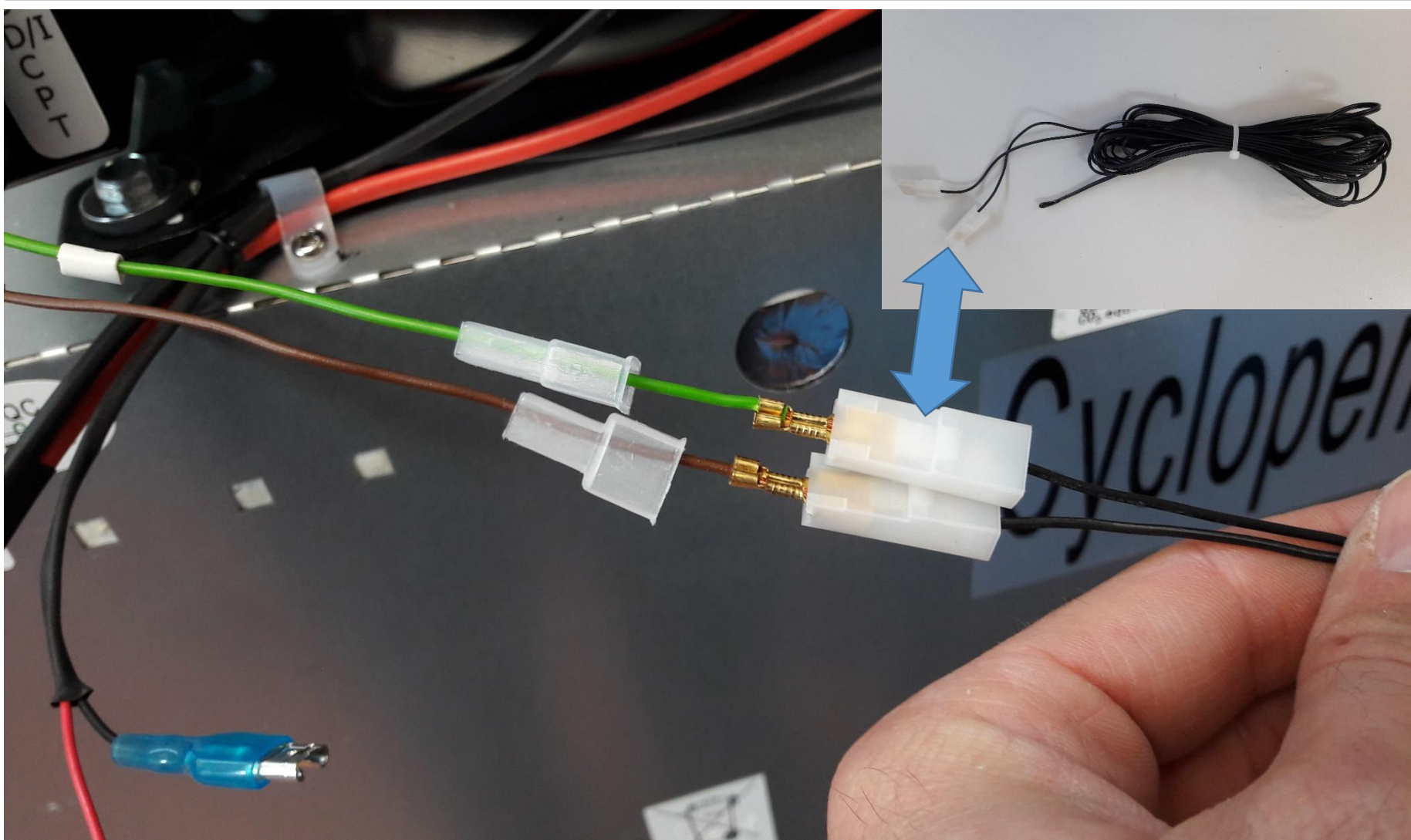




Connect the green cable of ACC01 on «C» and the brown cable on «T»



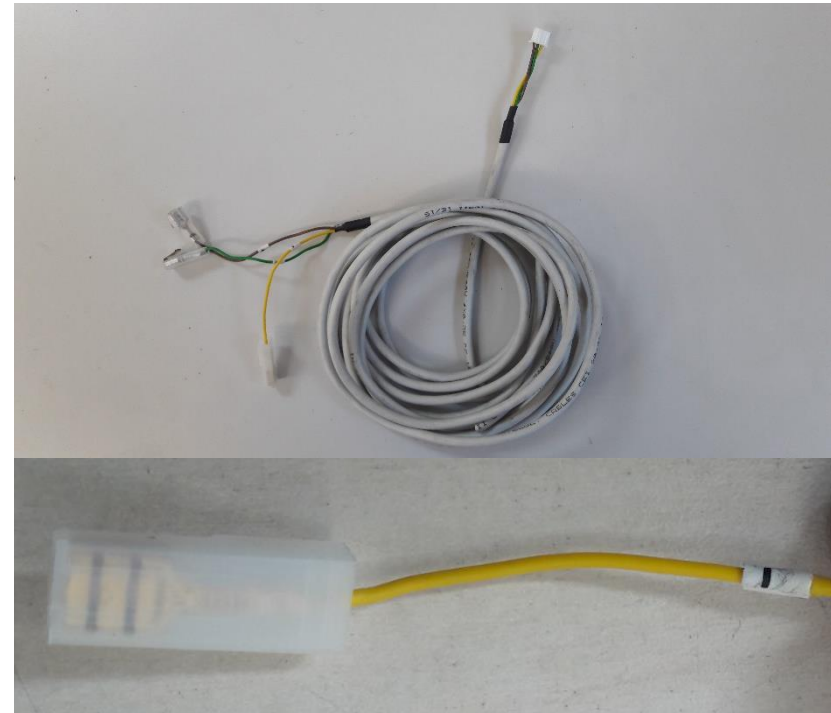




Connect the temperature probe to the green and brown cable. It doesn't matter how you connect it







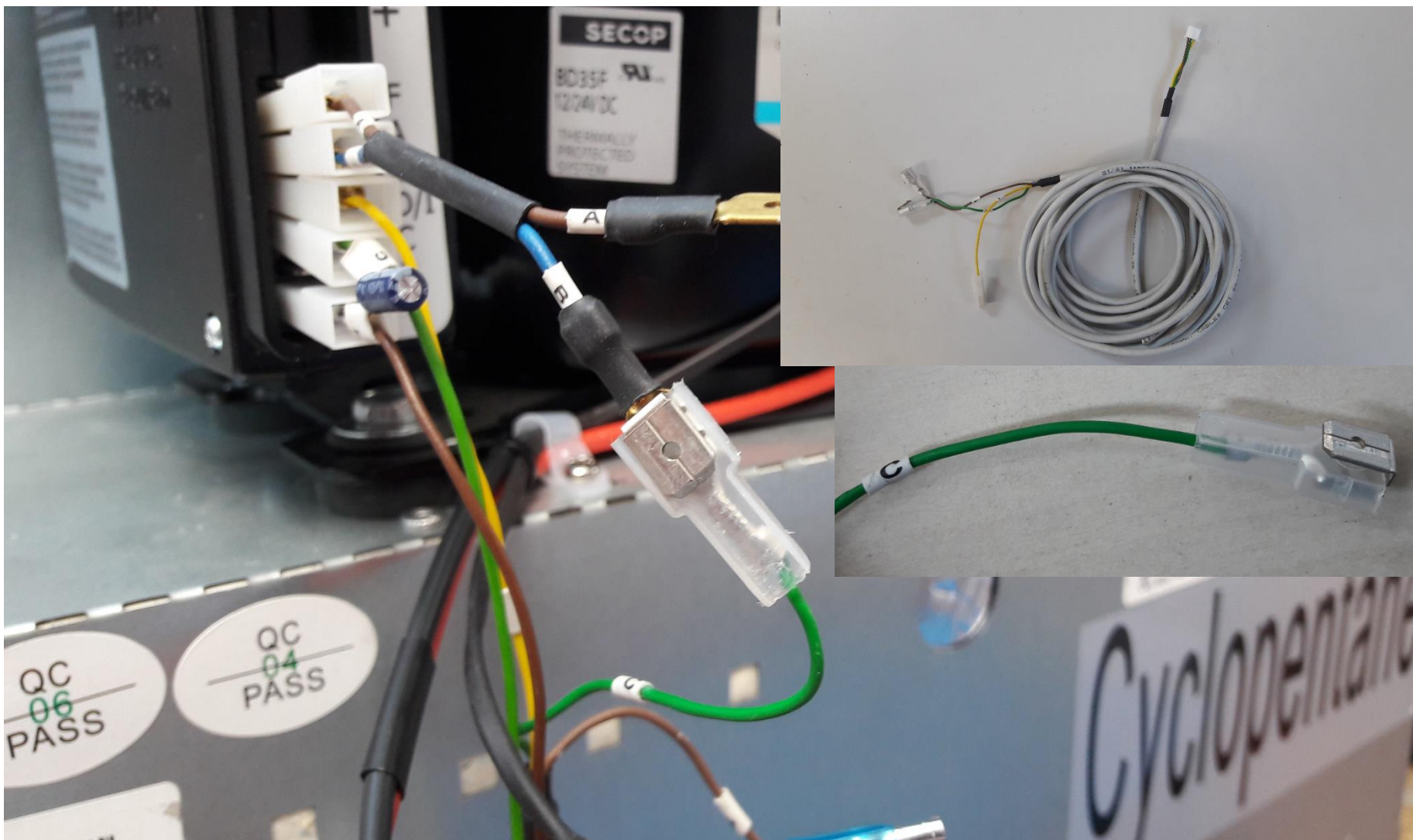
Connect the yellow cable marked with «I» on «D/I»



On ACC02 there is a cable marked with «A». This has to be connected to the «A» and the other one to «C»







Connect the green cable marked with «C» on the blue cable of ACC02 marked with «B»



Connect the brown cable marked with «+» on the brown cable of ACC02 marked with «A»

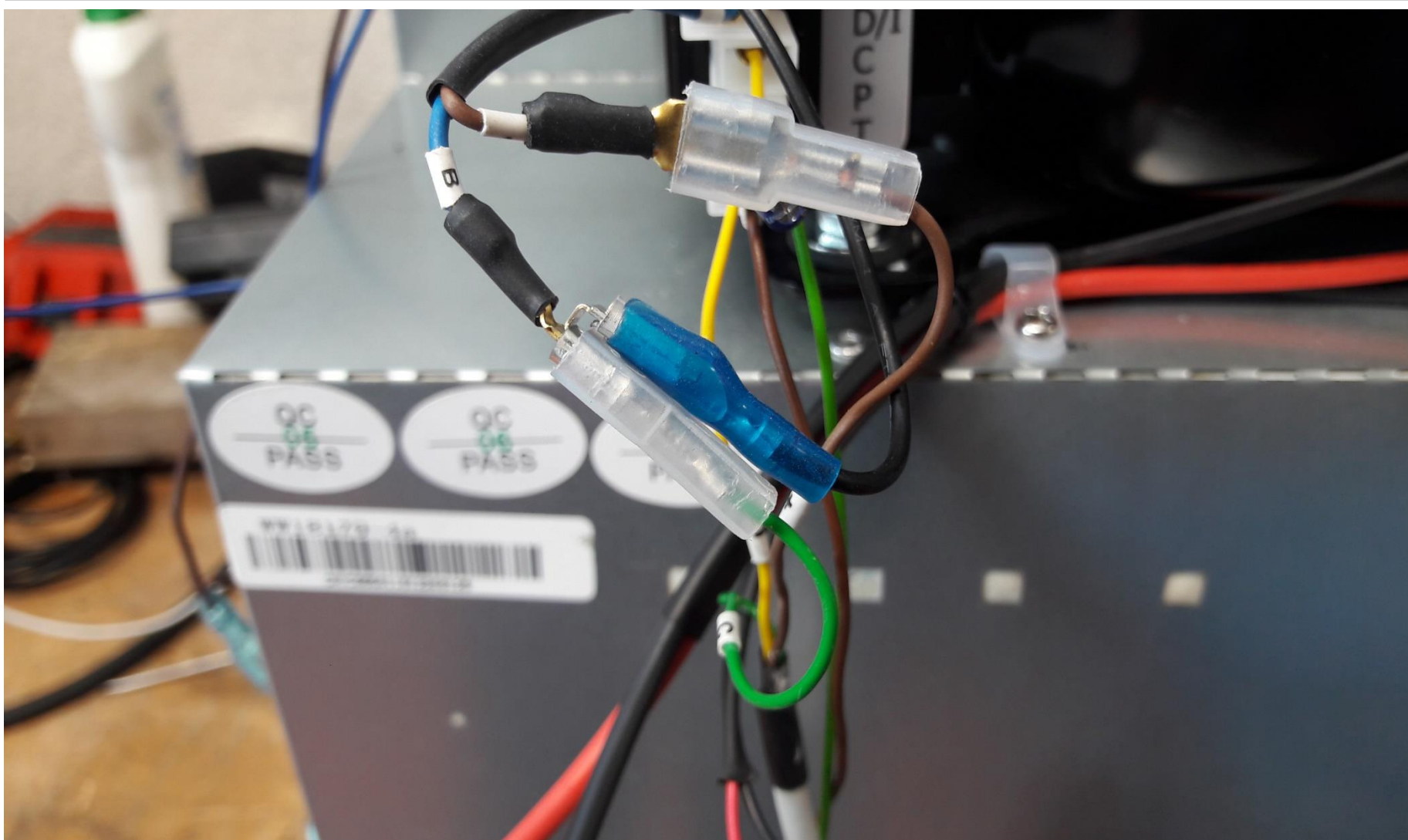
---

**ATTENTION:**

If you are installing the ITC on a cooling unit go to page 14

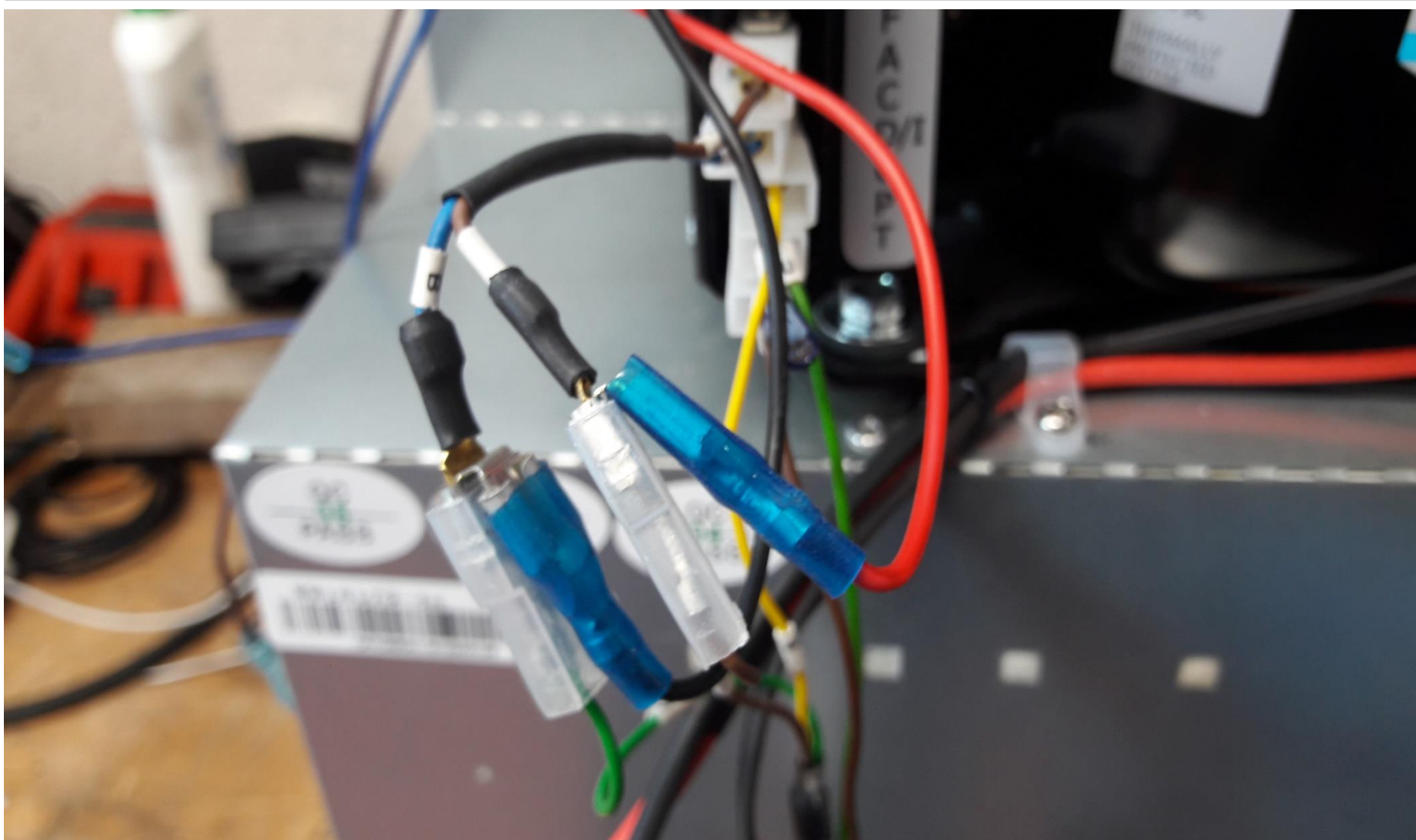
If you are installing the ITC on a fridge keep following the instructions





Connect the black cable of the light assembly to the green cable marked with «C»





Connect the red cable of the light assembly to the brown cable marked with «+»



Connect the black cable of the fan to «F» on the ECU

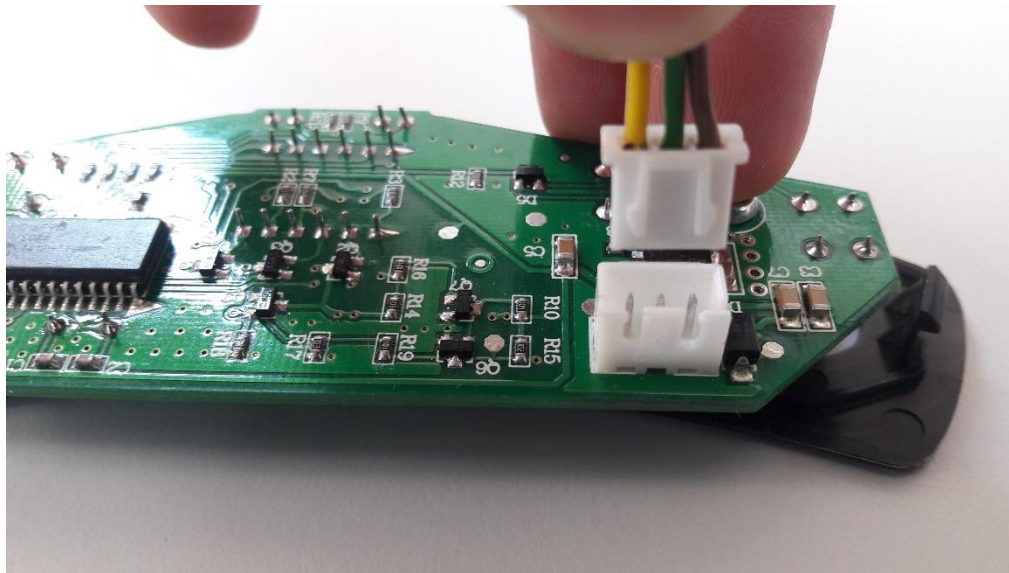


Connect power supply to the ECU, red cable on «+» and black cable on «-»



Connect the red cable of the fan on «+» of the power supply





Connect the cable to the ITC control panel.

The installation is done

